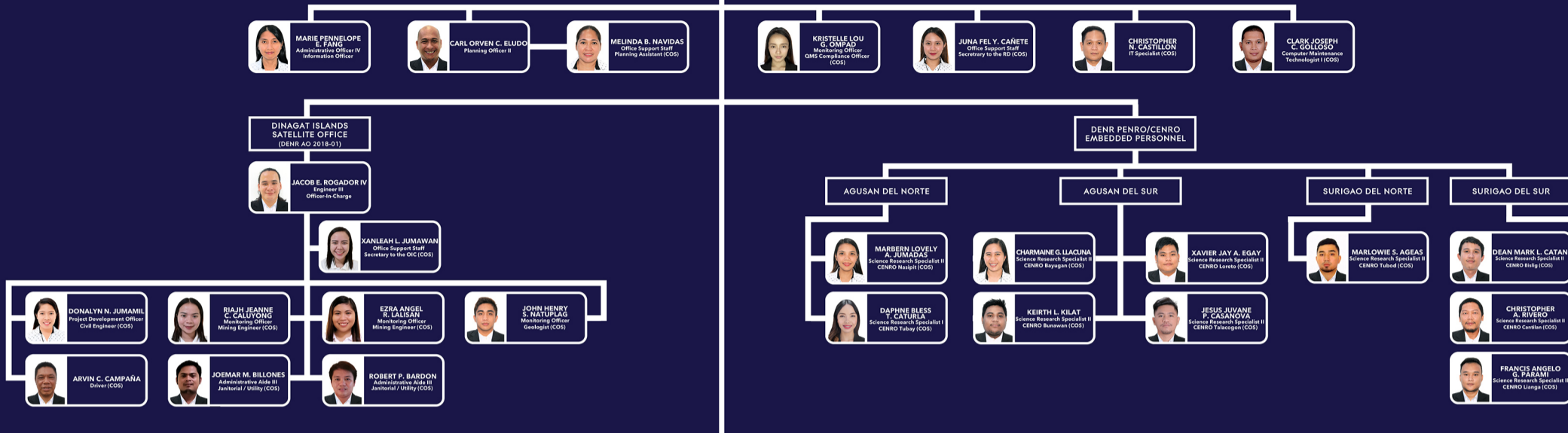




OFFICE OF THE REGIONAL DIRECTOR (ORD)



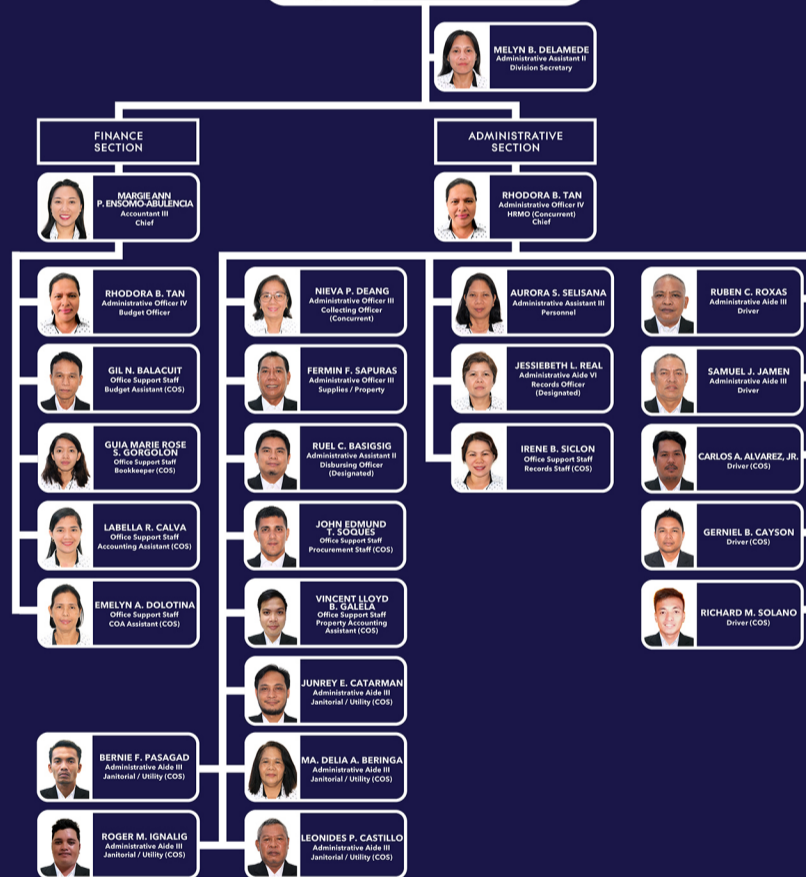
ORGANIZATIONAL CHART AND FUNCTIONAL STATEMENT

Based on DENR AO No. 2015-06, 29 April 2015
Providing for the Revised Organizational Structure and Functions of the Mines and Geosciences Bureau Pursuant to its Approved Rationalization Plan

FUNCTIONAL STATEMENT
The ORD shall implement at the regional level the pertinent laws, policies, rules and regulations and programs; exercise the management functions of planning, organizing, directing and controlling; undertake Information, Education and Communication campaign; and perform such other duties and functions as may be provided by law or delegated by the Director.

REPUBLIC OF THE PHILIPPINES DEPARTMENT OF ENVIRONMENT AND NATURAL RESOURCES MINES AND GEOSCIENCES BUREAU REGIONAL OFFICE No. XIII

FINANCE AND ADMINISTRATIVE DIVISION (FAD)

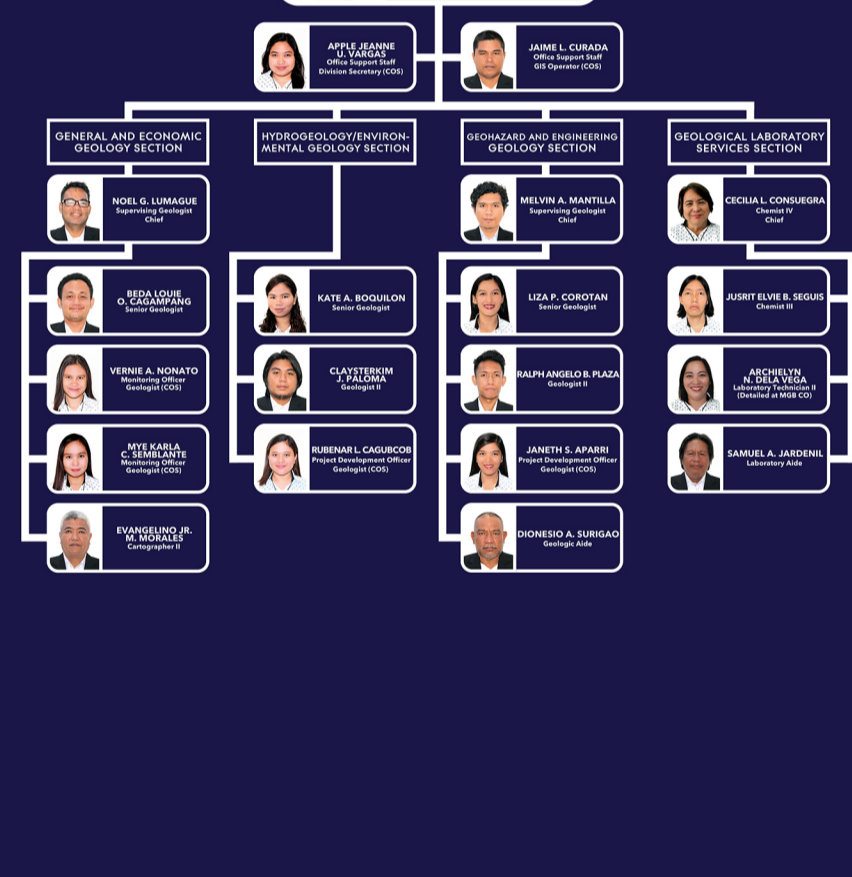


FUNCTIONAL STATEMENT

The FAD shall provide general administrative services pertaining to human and financial resources and property and records management. It shall have the following sections:

- Finance Section**
 - Provides budgeting and accounting services.
- Administrative Section**
 - Provides services on human resource, property and records management, including cashing and other general services.

GEOSCIENCES DIVISION (GD)

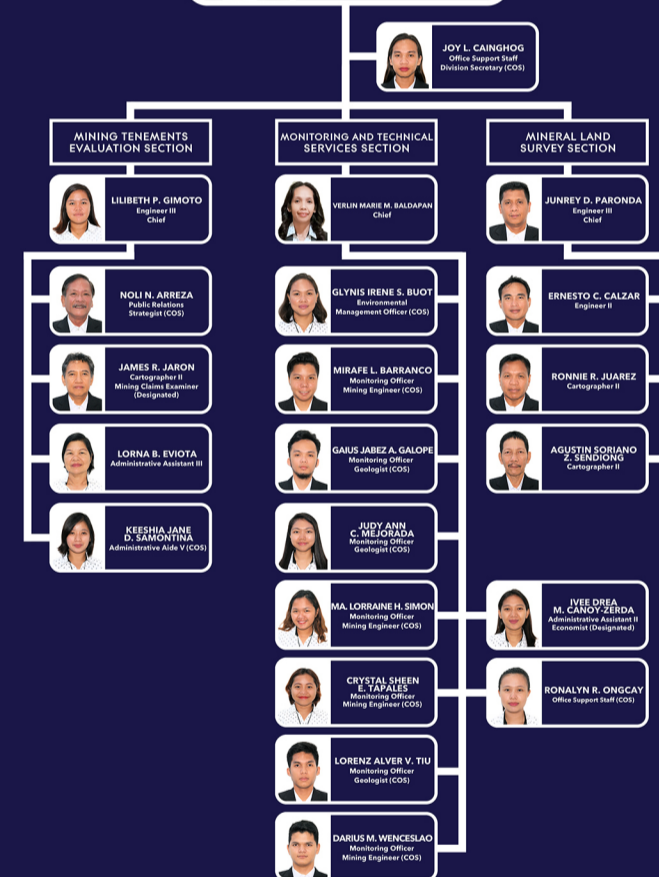


FUNCTIONAL STATEMENT

The GD shall undertake land and marine geoscientific surveys (including mineral exploration, geological mapping, geohazard assessment, groundwater resource exploration and vulnerability assessment, and engineering geological and geo-environmental studies) and provide geological laboratory and information services. It shall have the following sections:

- General and Economic Geology Section**
 - Conducts geological mapping, and other specialized studies including stratigraphy, structural geology and tectonics, and geomorphology, among others;
 - Conducts mineral exploration (including characterization and modelling of mineral deposits);
 - Undertakes the evaluation of proposed mineral reservation;
 - Conducts validation and inventory of mineral resource;
 - Assists in the evaluation of mining tenements in relation to mineral exploration; and
 - Conducts Information, Education and Communication campaigns on geosciences (including geology, geohazard, rocks and mineral deposits, hydrogeology).
- Hydrogeology and Environmental Geology Section**
 - Conducts hydrogeological exploration and vulnerability assessment; and
 - Conducts geo-environmental studies (including assessment of possible solid waste disposal sites and studies on climate change and other environmental impacts).
- Geohazard and Engineering Geology Section**
 - Conducts geohazard and risk assessment (including hazard modelling, and engineering geological studies);
 - Conducts relocation/resettlement and evacuation site assessment in support to disaster risk reduction and management programs; and
 - Undertakes geological scoping and review of engineering geological and geohazard assessment reports.
- Geological Laboratory Services Section**
 - Provides services on geological laboratory analysis of minerals/ores, rocks, soil, sediments, fossils, water and other types of samples.

MINE MANAGEMENT DIVISION (MMD)

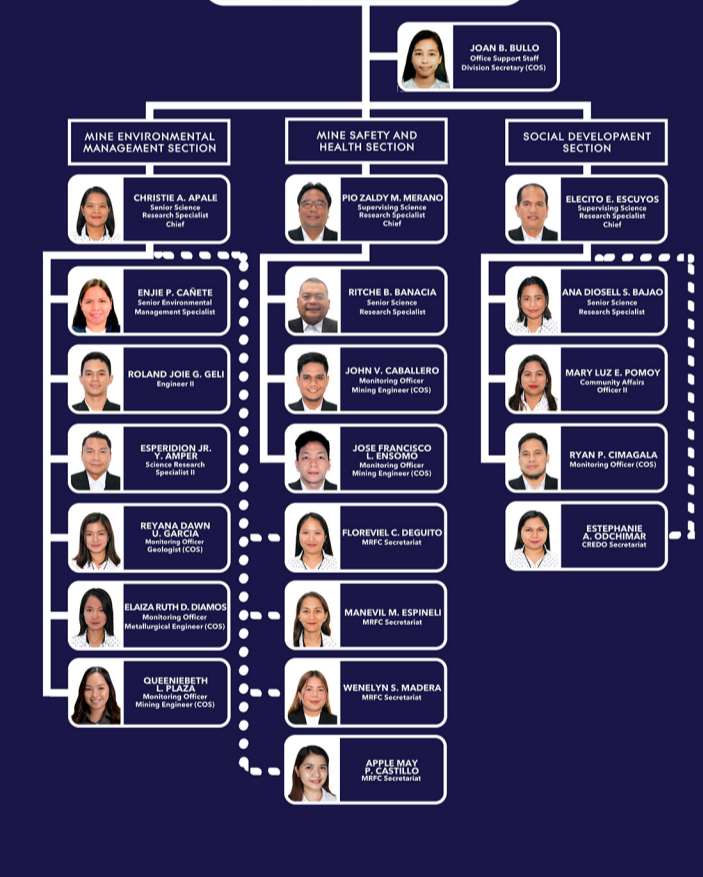


FUNCTIONAL STATEMENT

The MMD shall undertake initial evaluation of mining and mining-related applications, monitoring of the disposition and utilization of mineral lands and resources, and survey of mineral lands. It shall have the following sections:

- Mining Tenement Evaluation Section**
 - Undertakes initial evaluation of mining and mining-related applications;
 - Undertakes registration and maintains a registry of mining-related documents;
 - Investigates and assists in the resolution of conflicts/adverse claims/oppositions concerning mining tenements;
 - Evaluates the financial and economic components of proposed mining projects; and
 - Maintains the Regional MRMS.
- Monitoring and Technical Services Section**
 - Undertakes monitoring of the disposition and utilization of mineral lands and resources;
 - Validates mineral reserves of mining operations;
 - Undertakes mineral statistical analysis; and
 - Provides technical assistance to stakeholders.
- Mineral Lands Survey Section**
 - Undertakes evaluation of applications for survey order and survey returns, and survey plans in areas outside mineral reservations;
 - Undertakes initial evaluation of applications for survey order and survey returns, and survey plans in areas within mineral reservations;
 - Verifies mining tenement boundaries in connection with mining applications and in cases of conflicts/adverse claims/oppositions in areas outside mineral reservations;
 - Assists in the evaluation of mining applications in relation to mining tenement boundaries;
 - Manages the regional mining tenement control map; and
 - Evaluates the deputiation of Geodetic Engineers.

MINE SAFETY, ENVIRONMENT AND SOCIAL DEVELOPMENT DIVISION (MSSEDD)



FUNCTIONAL STATEMENT

The MSSEDD shall conduct the evaluation and monitoring of implementation of programs and investigate incidents/complaints on mine safety and health, environmental management and social development. It shall have the following sections:

- Mine Environmental Management Section**
 - Conducts initial evaluation/validation of environmental management programs;
 - Evaluates annual environmental management programs and small-scale mining environmental management plan;
 - Conducts monitoring of implementation of environmental management programs and compliance with other environmental requirements; and
 - Investigates incidents/complaints relating to environmental management and abandoned mines.
- Mine Safety and Health Section**
 - Evaluates mine safety and health programs and related permit applications;
 - Conducts monitoring of implementation of mine safety and health programs and compliance with other mine safety and health requirements; and
 - Investigates incidents/complaints relating to mine safety and health.
- Social Development Section**
 - Evaluates social development programs;
 - Conducts monitoring of implementation of social development programs and compliance with other social development requirements; and
 - Investigates incidents/complaints relating to the implementation of social development programs.