



**GEOSCIENCES DIVISION**  
**FUNCTIONAL ORGANIZATIONAL CHART**  
(Based on DENR AO No. 2015-06, 29 April 2015)

**Office of the Regional Director**



**GLENN MARCELO C. NOBLE**  
OIC, Regional Director

**Geosciences Division**



**ROMEO M. DALODADO**  
Chief Geologist

**APPLE JEANNE U. VARGAS**  
Records Clerk (C)



**BRYAN C. CUARTERO**  
GIS Operator (C)



**JAIME L. CURADA**  
GIS Operator (C)



**GENERAL AND ECONOMIC  
GEOLOGY SECTION**



**LIZA T. PACETE**  
Senior Geologist



**CLAYSTERKIM J. PALOMA**  
Geologist II



**VERNIE A. NONATO**  
Geologist (C)



**MYE KARLA C. SEMBLANTE**  
Geologist (C)



**EVANGELINO M. MORALES, JR.**  
Cartographer II

**HYDROGEOLOGY/ ENVIRON-  
MENTAL GEOLOGY SECTION**



**ELAINE L. GALIDO**  
Supervising Geologist



**KATE A. BOQUILON**  
Senior Geologist



**RALPH ANGELO B. PLAZA**  
Geologist II



**RUBENAR L. CAGUBCOB**  
Geologist II (C)

**GEOHAZARD AND ENGINEERING  
GEOLOGY SECTION**



**MELVIN A. MANTILLA**  
Supervising Geologist



**BEDA LOUIE O. CAGAMPANG**  
Senior Geologist



**JANETH S. APPARRI**  
Geologist II (C)



**DIONESIO A. SURIGAO**  
Geologic Aide

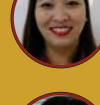
**LABORATORY  
SERVICES SECTION**



**CECILIA L. CONSUEGRA**  
Chemist IV



**JUSRIT ELVIE B. SEGUIS**  
Chemist III



**ARCHIELYN C. NIMEZ**  
Laboratory Technician II



**SAMUEL A. JARDENIL**  
Laboratory Aide



**IRENE B. SICLON**  
Laboratory Aide (C)

**General and Economic Geology Section**

The function/s of the General and Economic Geology Section shall be as follows:

- Conducts geological mapping, and other specialized studies involving stratigraphy, structural geology and tectonics, geomorphology, among others;
- Conducts Mineral Exploration (including characterization and modeling of mineral deposits);
- Undertakes the evaluation of proposed mineral reservations;
- Conducts validation and inventory of mineral resource;
- Assist in the evaluation of mining tenements in relation to mineral exploration; and
- Conducts information, education and communication campaigns on geosciences (including geology, geohazard, rocks and mineral deposits, and hydrogeology).

**Hydrogeology and Environmental Geology Section**

The function/s of the Hydrogeology and Environmental Geology Section shall be as follows:

- Conducts hydrological exploration and vulnerability assessment; and
- Conducts geo-environmental studies (including assessment of possible solid waste disposal sites and studies on climate change and other environmental impacts).

**Geohazard and Engineering Geology Section**

The function/s of the Geohazard and Engineering Geology Section shall be as follows:

- Conducts geohazard and risk assessment (including hazard modelling, and engineering geological studies);
- Conducts relocation/resettlement and evacuation site assessment in support to disaster risk reduction and management programs; and
- Undertakes geological scoping and review of engineering geological and geohazard assessment reports.

**Geological Laboratory Services Section**

The function/s of the Geological Laboratory Services Section shall be as follows:

- Provides services on geological laboratory analysis of mineral/ores, rocks, soil, sediments, fossils, water and other types of samples.